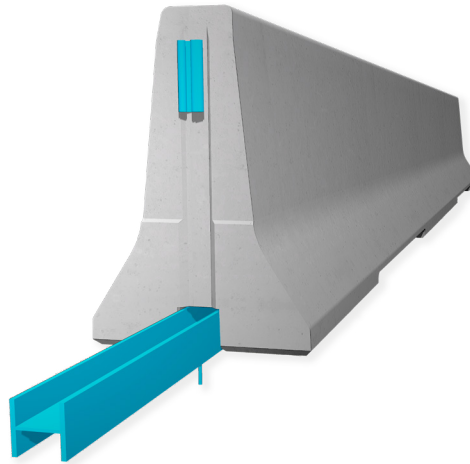


# REBLOC 100SFSA\_8

## Technical Datasheet

Precast Concrete  
Vehicle Restraint System

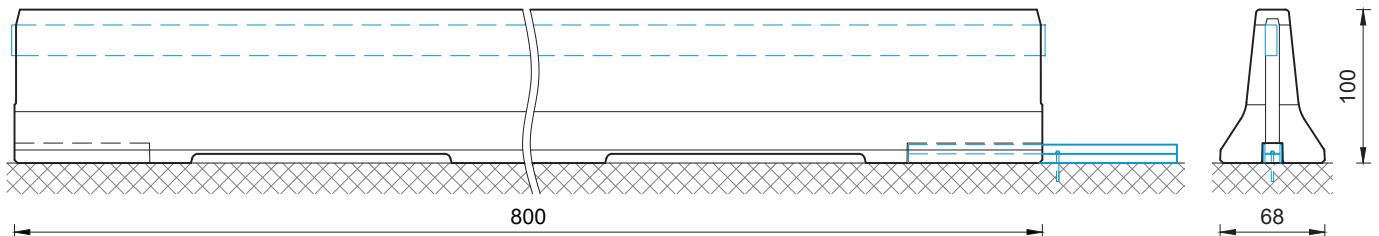
Permanent System  
Free standing with position securing



REBLOC 100SFSA\_8

### Technical data

	L4b / H4b	L2 / H2
Containment level		
Working width	W5 ( $W_N \leq 1.7$ m)	W4 ( $W_N \leq 1.3$ m)
Impact severity level	ASI B	ASI B
Vehicle intrusion	VI8 ( $VI_N \leq 3.5$ m)	VI1 ( $VI_N \leq 0.6$ m)
Installation	free standing with position securing (anchor) (1 x adhesive anchor M16 in concrete   asphalt per element)	
Application	single-sided   double-sided	
Minimum installation length	96 m (12 elements) + initial/end anchorage	
Initial/end anchorage	required (according to anchor chart 39-10501): e.g. REBLOC 100SFS_4T or force closure	
Dimensions L x W x H in cm	800 x 68 x 100 cm	
Weight/element	approx. 6480 kg	
Curve radius	$r \geq 370$ m, smaller radii on request	
Coupling/exposed steel parts	fully integrated, exposed parts hot-dip galvanized	
CE certification	✓	



all dimensions in cm