

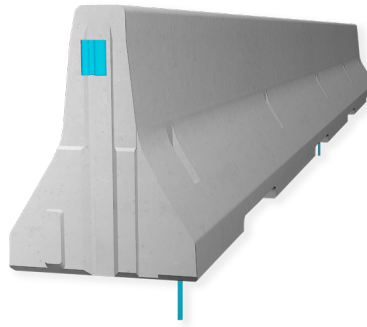
**REBLOC 80XA\_8\_3P**

Technical Datasheet

ASI B

Precast Concrete  
Vehicle Restraint System

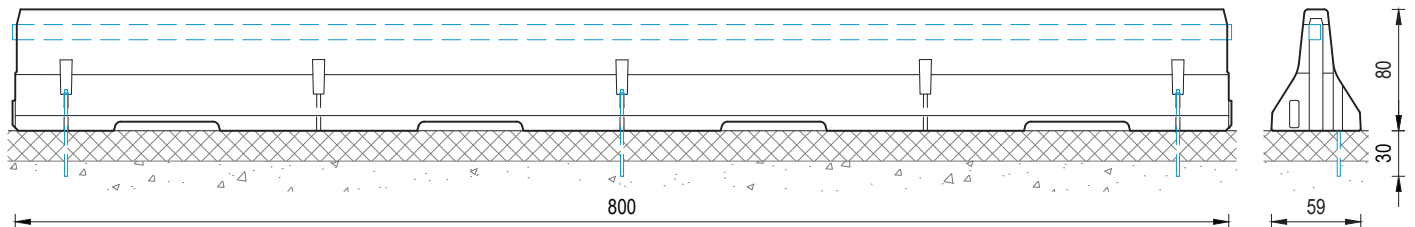
Permanent System  
Anchored



REBLOC 80XA\_8\_3P

**Technical data**

Containment level	L2 / H2
Working width	W2 ( $W_N \leq 0.8$ m)
Impact severity level	ASI B
Vehicle intrusion	VI3 ( $VI_N \leq 1.0$ m)
Installation	anchored in asphalt (per element 3 x anchor pins RPIN20_580 on the front or rear side)
Application	single-sided   double-sided
Minimum installation length	56 m (7 elements)
Initial/end anchorage	not necessary, optional available
Dimensions L x W x H in cm	800 x 59 x 80 cm
Weight/element	approx. 4620 kg
Curve radius	$r \geq 235$ m, smaller radii on request
Coupling/exposed steel parts	fully integrated, exposed parts hot-dip galvanized
CE certification	✓



all dimensions in cm