

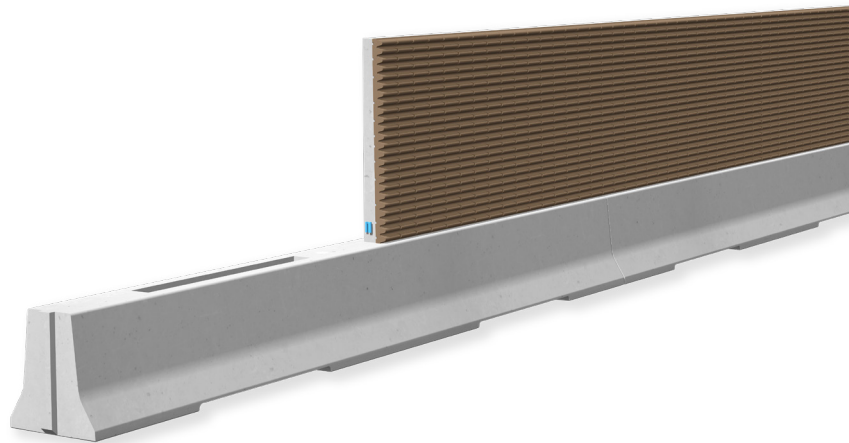
# REBLOC NB100/300\_8

Technical Datasheet

ASI B

Precast Concrete  
Vehicle Restraint System

Integrated Noise Barrier  
Free standing



NB100/300\_8

## Technical data

Containment level	L2 / H2
Working width	W4 ( $W_N \leq 1.3$ m)
Impact severity level	ASI B
Vehicle intrusion	VI1 ( $VI_N \leq 0.6$ m)
Airborne sound insulation $DL_{SI}$	class D4 acc. to EN 1793-6 (in situ)
Installation	free standing on asphalt   concrete
Application	single-sided
Minimum installation length	64 m (8 base elements, 7 panels)
Initial/end anchorage	not necessary, optional available
Base element RNB100_8	
Dimensions L x W x H in cm   Weight	800 x 95 x 100 cm   approx. 5980 kg
Concrete panel with absorber NB300_8	
Dimensions L x W x H in cm   Weight	800 x 24 x 280 cm   approx. 7470 kg
Curve radius	$r \geq 200$ m, smaller radii on request
Coupling/exposed steel parts	fully integrated, exposed parts hot-dip galvanized
CE certification	✓
Miscellaneous	Different materials, colors and creative designs are available as sound absorption material.

all dimensions in cm

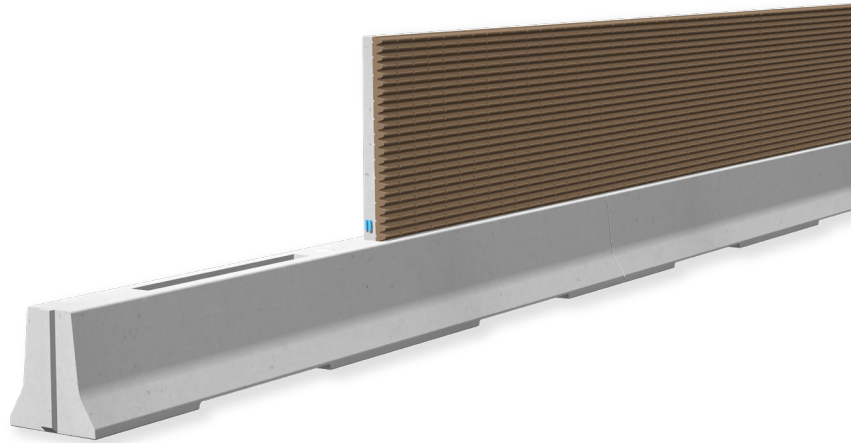
# REBLOC NB100/300\_8

Technical Datasheet

ASI B

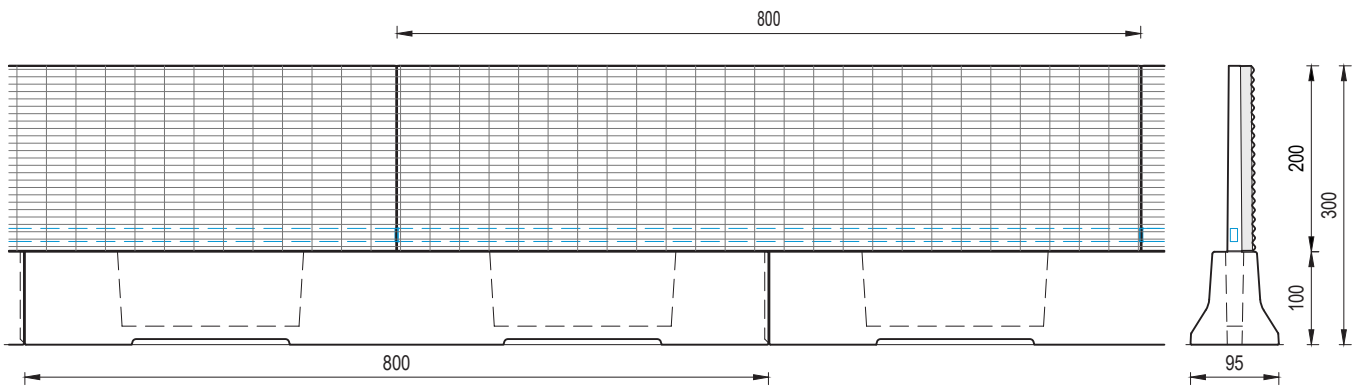
Precast Concrete  
Vehicle Restraint System

Integrated Noise Barrier  
Free standing



NB100/300\_8

## Technical drawing



all dimensions in cm