

# REBLOC 100SFA\_8

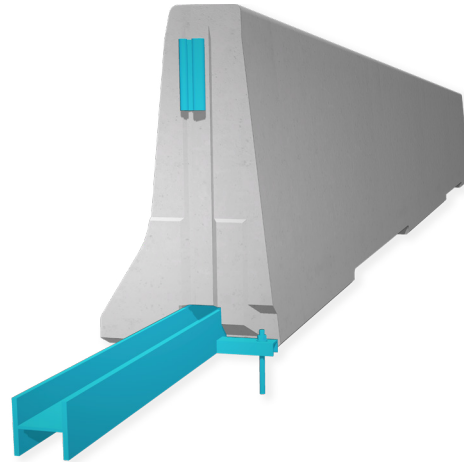
## Technical Datasheet

ASI B

REBLOC 100SFA\_8

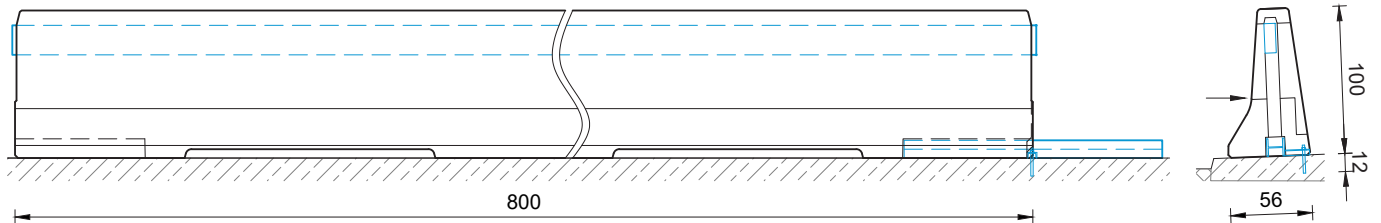
**Precast Concrete  
Vehicle Restraint System**

**Permanent System  
Free standing with  
position securing (anchor)**



### Technical data

Containment level	L4b / H4b
Working width	W4 ( $W_N \leq 1.3$ m)
Impact severity level	ASI B
Vehicle intrusion	VI8 ( $VI_N \leq 3.5$ m)
Installation	free standing with position securing (anchor) (1 x M16 adhesive anchor in asphalt   concrete per element)
Application	single-sided
Minimum installation length	96 m (12 elements) + initial/end anchorage
Initial/end anchorage	required (according to anchor chart 39-10501): e.g. REBLOC 100SF_4TL   100SF_4TR or force closure
Dimensions L x W x H in cm	800 x 56 x 100 cm
Weight/element	approx. 6080 kg
Curve radius	$r \geq 370$ m, smaller radii on request
Coupling/exposed steel parts	fully integrated, exposed parts hot-dip galvanized
CE certification	✓



all dimensions in cm