

# REBLOC 80L\_4

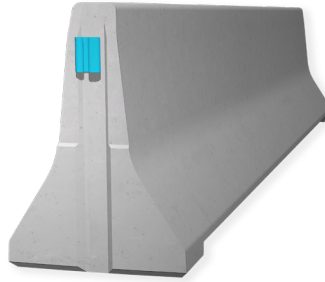
## Technical Datasheet

ASI B

REBLOC 80L\_4

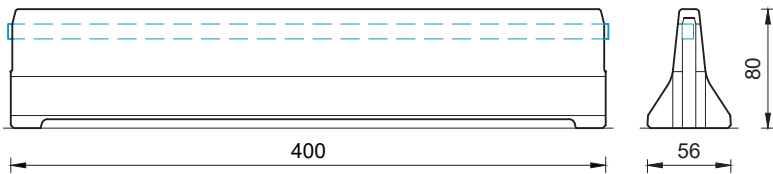
Precast Concrete  
Vehicle Restraint System

Permanent System  
Free standing



### Technical data

|                              |  |
|------------------------------|--|
| Containment level            | N2   |
| Working width                | W4 ( $W_N \leq 1.7$ m)   |
| Impact severity level        | ASI B  |
| Installation                 | free standing on asphalt   concrete  |
| Application                  | single-sided   double-sided  |
| Minimum installation length  | 68 m (17 elements) + initial/end anchorage   |
| Initial/end anchorage        | required (according to anchor chart 39-10501):<br>e.g. REBLOC 80H_4T   80H_7T or force closure |
| Dimensions L x W x H in cm   | 400 x 56 x 80  |
| Weight/element               | approx. 1480 kg  |
| Curve radius                 | $r \geq 55$ m, smaller radii on request  |
| Coupling/exposed steel parts | fully integrated, exposed parts hot-dip galvanized   |
| CE certification             | ✓  |



all dimensions in cm