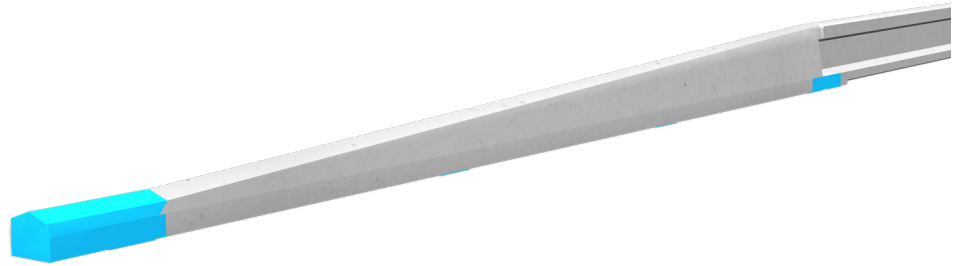


REBLOC TE 50H_7T

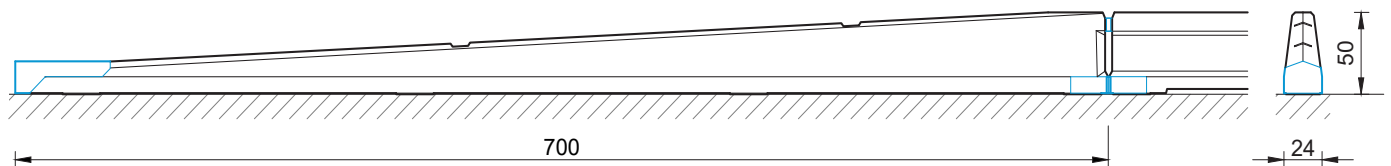
Technical Datasheet

ASI A

REBLOC TE 50H_7T

Terminal**Temporary application**
Free standing**Technical data**

| | |
|---|--|
| Performance class | P2 |
| Location | A (Terminal on upstream as well as downstream position) |
| Impact severity level | ASI A |
| Permanent lateral displacement | $D_a = \text{class x1}$ $D_d = \text{class y2}$ |
| Exit box dimension | Class Z_1 |
| Installation | free standing on asphalt concrete |
| Application | single-sided double-sided |
| Required elements | 1 x concrete element REBLOC TE50H_6.9T 1 x steel sheet cover REBLOC RCA50H_0.6T |
| Concrete element REBLOC TE50H_6.9T Dimensions L x W x H in cm Weight | 699 x 24 x 10-50 cm approx. 1150 kg |
| Coupling/exposed steel parts | fully integrated, exposed parts hot-dip galvanized or stainless steel |
| Test standard | ENV 1317-4:2001 |
| Direct compatible safety barriers | all safety barriers of series REBLOC 50H |
| Further compatible safety barriers | all REBLOC safety barriers. Connection to terminals always with corresponding transition elements. No transition element with height difference may be connected directly to the terminal. |

**Note initial/end anchorage:**

If safety barriers require fixed anchoring at the beginning and end of the system, such anchoring must also be provided in combination with the terminals. If necessary, spot foundations must be made at the appropriate points to ensure effective initial/end anchoring. In such cases, REBLOC must be consulted.

all dimensions in cm